

KRB Series

- Higher ripple current on high frequency band
- Endurance with ripple current : 3,000 hours at 105°C.
- Rated voltage range : 400 to 450V, Capacitance range : 90 to 340μF
- Ideal for high frequency drive power conversion system applications such as solar power conditioners
- Non solvent resistant type
- RoHS2 Compliant

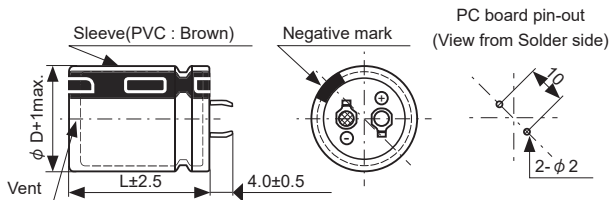
◆ SPECIFICATION

Items	Characteristics		
Category	-40 to +105°C		
Temperature Range	-40 to +105°C		
Rated Voltage Range	400 to 450V _{dc}		
Capacitance Tolerance	±20% (M) (at 20°C, 120Hz)		
Leakage Current	$I \leq 3\sqrt{CV}$ Where, I : Max. leakage current (μA), C : Nominal capacitance (μF), V : Rated voltage (V) (at 20°C after 5 minutes)		
Dissipation Factor (tan δ)	Rated voltage (V _{dc})	400V	420 & 450V
	tanδ (Max.)	0.15	0.20
Low Temperature Characteristics (Max. Impedance Ratio)	Rated voltage (V _{dc})	400V	420 & 450V
	Z(-25°C)/Z(+20°C)	3	8
	Z(-40°C)/Z(+20°C)	12	14
Endurance	The following specifications shall be satisfied when the capacitors are restored to 20°C after subjected to DC voltage with the rated ripple current is applied (the peak voltage shall not exceed the rated voltage) for 3,000 hours at 105°C .		
	Capacitance change	≤ ±20% of the initial value	
	D.F. (tan δ)	≤ 200% of the initial specified value	
	Leakage current	≤ The initial specified value	
Shelf Life	The following specifications shall be satisfied when the capacitors are restored to 20°C after exposing them for 1,000 hours at 105°C without voltage applied. Before the measurement, the capacitor shall be preconditioned by applying voltage according to Item 4.1 of JIS C 5101-4.		
	Capacitance change	≤ ±15% of the initial value	
	D.F. (tan δ)	≤ 150% of the initial specified value	
	Leakage current	≤ The initial specified value	

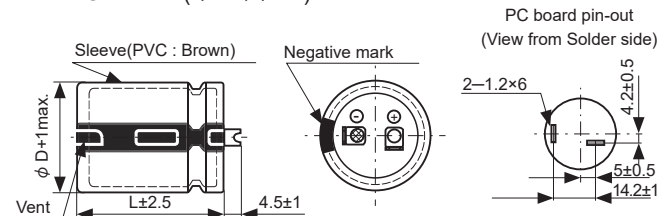
◆ DIMENSIONS[mm]

- Terminal Code : VS (φ 30, φ 35) : Standard

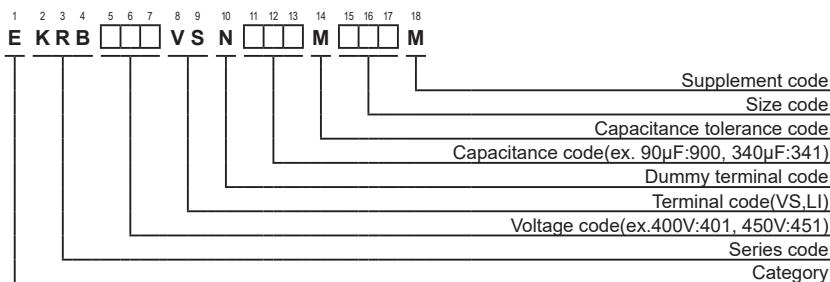
- Terminal Code : LI (φ 30, φ 35)



The standard design has no plastic disc.



◆ PART NUMBERING SYSTEM





LARGE CAPACITANCE ALUMINUM ELECTROLYTIC CAPACITORS

KRB Series

◆ STANDARD RATINGS

WV (V _{dc})	Cap (μF)	Case size φ D×L(mm)	tan δ	Rated ripple current (Arms/105°C, 100kHz)	Part No.	WV (V _{dc})	Cap (μF)	Case size φ D×L(mm)	tan δ	Rated ripple current (Arms/105°C, 100kHz)	Part No.		
400	120	30×35	0.15	5.54	EKRB401VSN121MR35M	450	90	30×35	0.20	4.58	EKRB451VSN900MR35M		
	150	30×41	0.15	5.69	EKRB401VSN151MR41M		110	30×41	0.20	4.91	EKRB451VSN111MR41M		
	170	30×46	0.15	5.83	EKRB401VSN171MR46M		120	35×35	0.20	5.23	EKRB451VSN121MA35M		
	170	35×35	0.15	5.87	EKRB401VSN171MA35M		130	30×46	0.20	5.15	EKRB451VSN131MR46M		
	200	30×51	0.15	5.97	EKRB401VSN201MR51M		150	30×51	0.20	5.39	EKRB451VSN151MR51M		
	210	35×41	0.15	6.10	EKRB401VSN211MA41M		160	30×54	0.20	5.54	EKRB451VSN161MR54M		
	220	30×54	0.15	6.06	EKRB401VSN221MR54M		160	35×41	0.20	5.63	EKRB451VSN161MA41M		
	240	30×59	0.15	6.20	EKRB401VSN241MR59M		180	30×59	0.20	5.78	EKRB451VSN181MR59M		
	240	35×46	0.15	6.30	EKRB401VSN241MA46M		180	35×46	0.20	5.95	EKRB451VSN181MA46M		
	280	35×51	0.15	6.45	EKRB401VSN281MA51M		210	35×51	0.20	6.28	EKRB451VSN211MA51M		
	300	35×54	0.15	6.60	EKRB401VSN301MA54M		220	35×54	0.20	6.47	EKRB451VSN221MA54M		
	340	35×59	0.15	6.85	EKRB401VSN341MA59M		250	35×59	0.20	6.72	EKRB451VSN251MA59M		
	420	100	30×35	0.20	4.58		EKRB421VSN101MR35M						
		130	30×41	0.20	4.91		EKRB421VSN131MR41M						
140		30×46	0.20	5.15	EKRB421VSN141MR46M								
140		35×35	0.20	5.23	EKRB421VSN141MA35M								
170		30×51	0.20	5.39	EKRB421VSN171MR51M								
180		30×54	0.20	5.54	EKRB421VSN181MR54M								
180		35×41	0.20	5.63	EKRB421VSN181MA41M								
200		30×59	0.20	5.78	EKRB421VSN201MR59M								
210		35×46	0.20	5.95	EKRB421VSN211MA46M								
240		35×51	0.20	6.28	EKRB421VSN241MA51M								
260		35×54	0.20	6.47	EKRB421VSN261MA54M								
290		35×59	0.20	6.72	EKRB421VSN291MA59M								

◆ RATED RIPPLE CURRENT MULTIPLIERS

● Frequency Multipliers

Frequency(Hz)	50	120	300	1k	10k	50k	100k
400 to 450V _{dc}	0.22	0.33	0.49	0.73	1.00	1.00	1.00