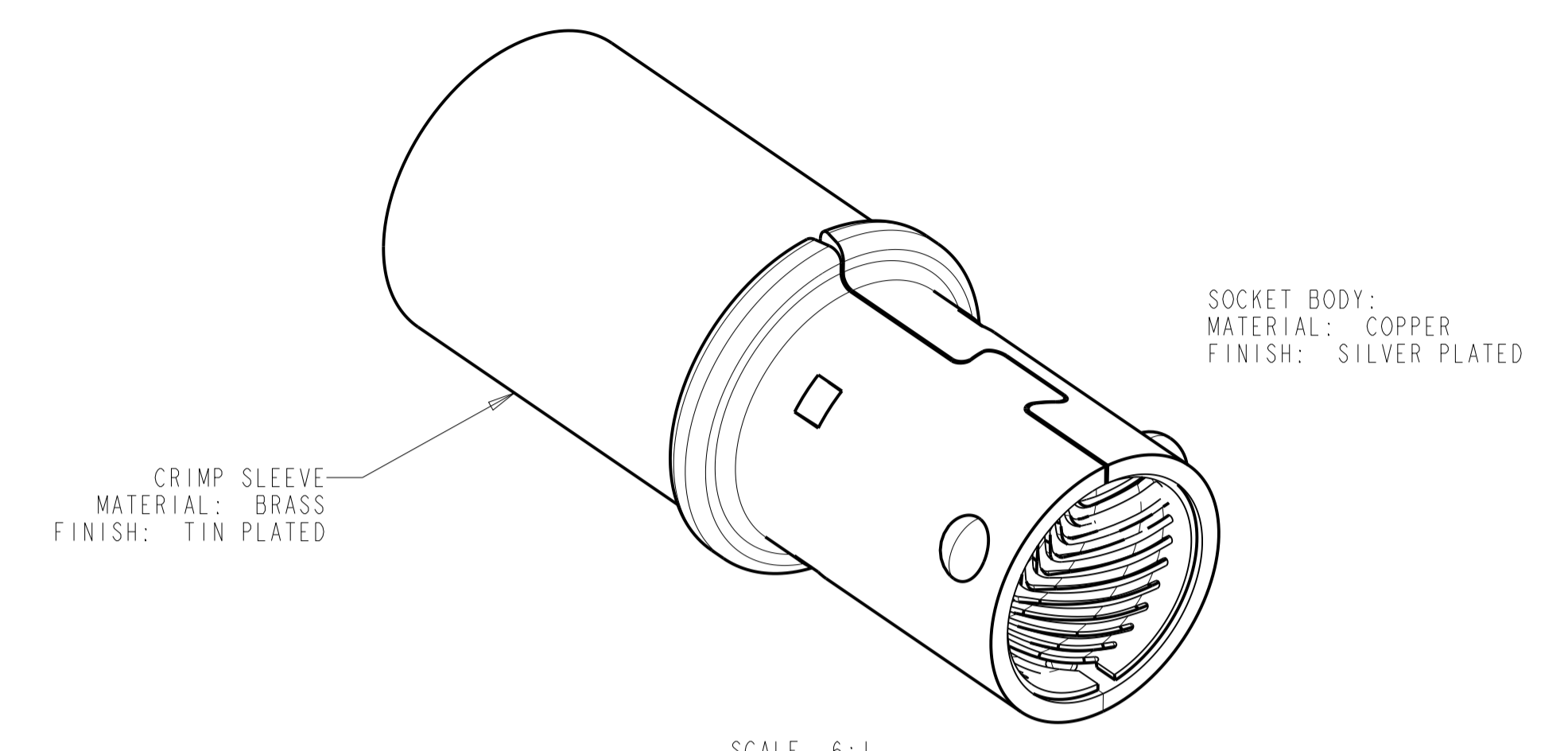


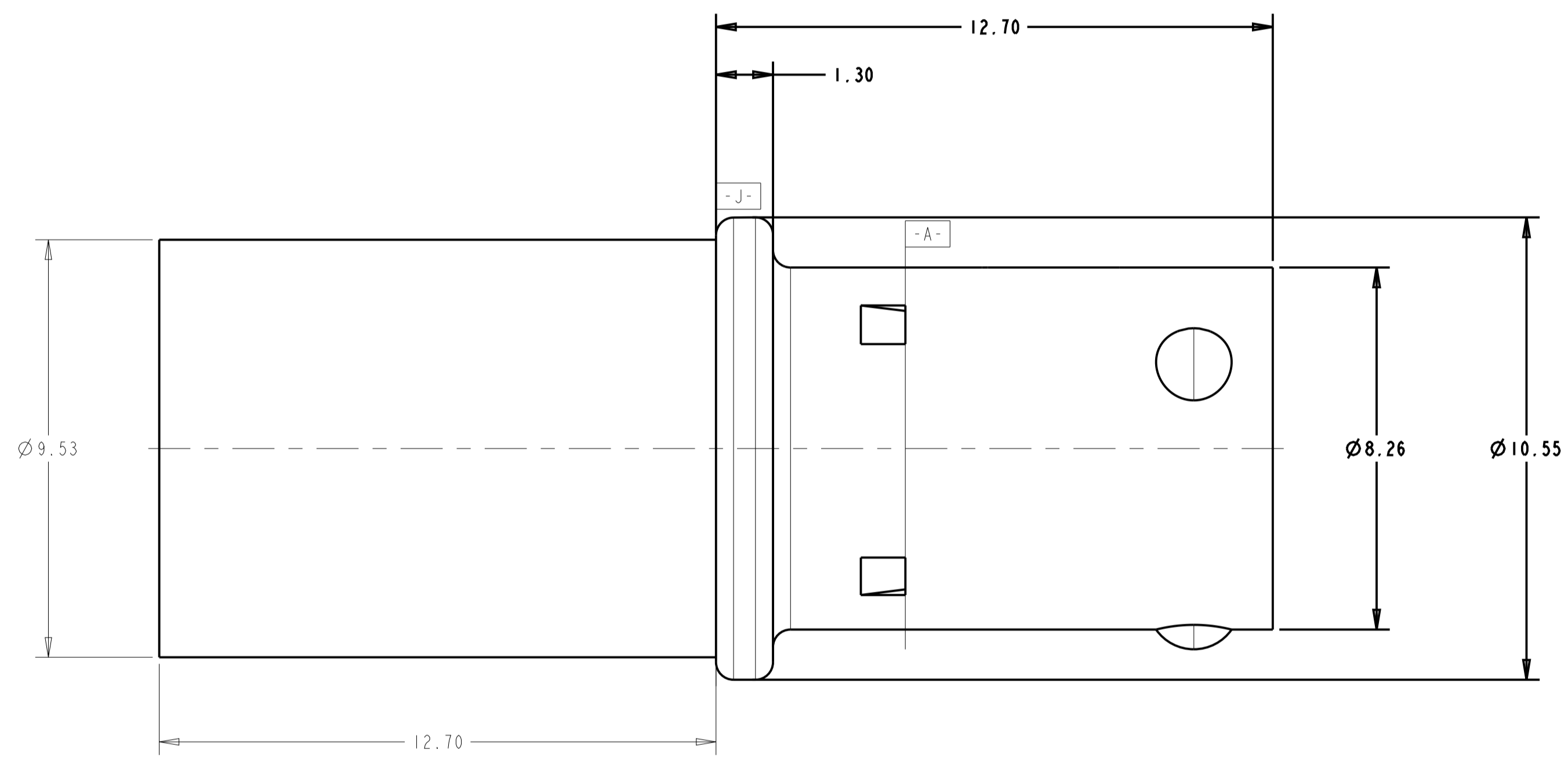
LOC		DIST		REVISONS			
AA	46	P	LTH	DESCRIPTION	DATE	DWN	APVD
		I		PRELIMINARY	24FEB2011	LAW	JR

- PART NUMBER CHANGES AND OR DESIGN CHANGES AFFECTING ITEM INTERCHANGEABILITY REQUIRE PRIOR TYCO CONNECTIVITY APPROVAL AND AUTORIZATION BY REVISION TO THIS DRAWING
- ITEMS PROVIDED TO THIS SPECIFICATION TO BE PERMANENTLY IDENTIFIED PER THE FOLLOWING IDENTIFIER:



SCALE 6:1

CONTACT, POWER ARCH BAND
MATERIAL: COPPER ALLOY
FINISH: GOLD PLATED



PROPOSED DESIGN
 THIS PRODUCT HAS NOT COMPLETED VALIDATION TESTING
 DESIGN IS SUBJECT TO CHANGE WITHOUT NOTICE

OBsolete

2085422-1
 PART NUMBER

<small>THIS DRAWING IS UNPUBLISHED. RELEASED FOR PUBLICATION BY TYCO ELECTRONICS CORPORATION. ALL INTERNATIONAL RIGHTS RESERVED.</small>		DWN: L.A. WENSEL 24FEB2011 CMT: J. ROSSMAN 24FEB2011 APVD: S. HELCKINGER 24FEB2011		Tyco Electronics Corporation Harrisburg, PA 17105-3608	
DIMENSIONS: mm 0 PLC ± 1 PLC ± 2 PLC ±0.25 3 PLC ± 4 PLC ± ANGLES ±		TOLERANCES UNLESS OTHERWISE SPECIFIED: PRODUCT SPEC: 108-2323 APPLICATION SPEC: 114-13299		NAME: SOCKET ASSEMBLY WITH 4 AWG CRIMP BARREL, DRAWER SERIES 2 SIZE: A1 CAGE CODE: 00779 DRAWING NO: 2085422	
MATERIAL: SEE ISOMETRIC FINISH: SEE ISOMETRIC		WEIGHT: - CUSTOMER DRAWING		RESTRICTED TO: - SCALE: 10:1 SHEET: 1 OF 1 REV: 2	