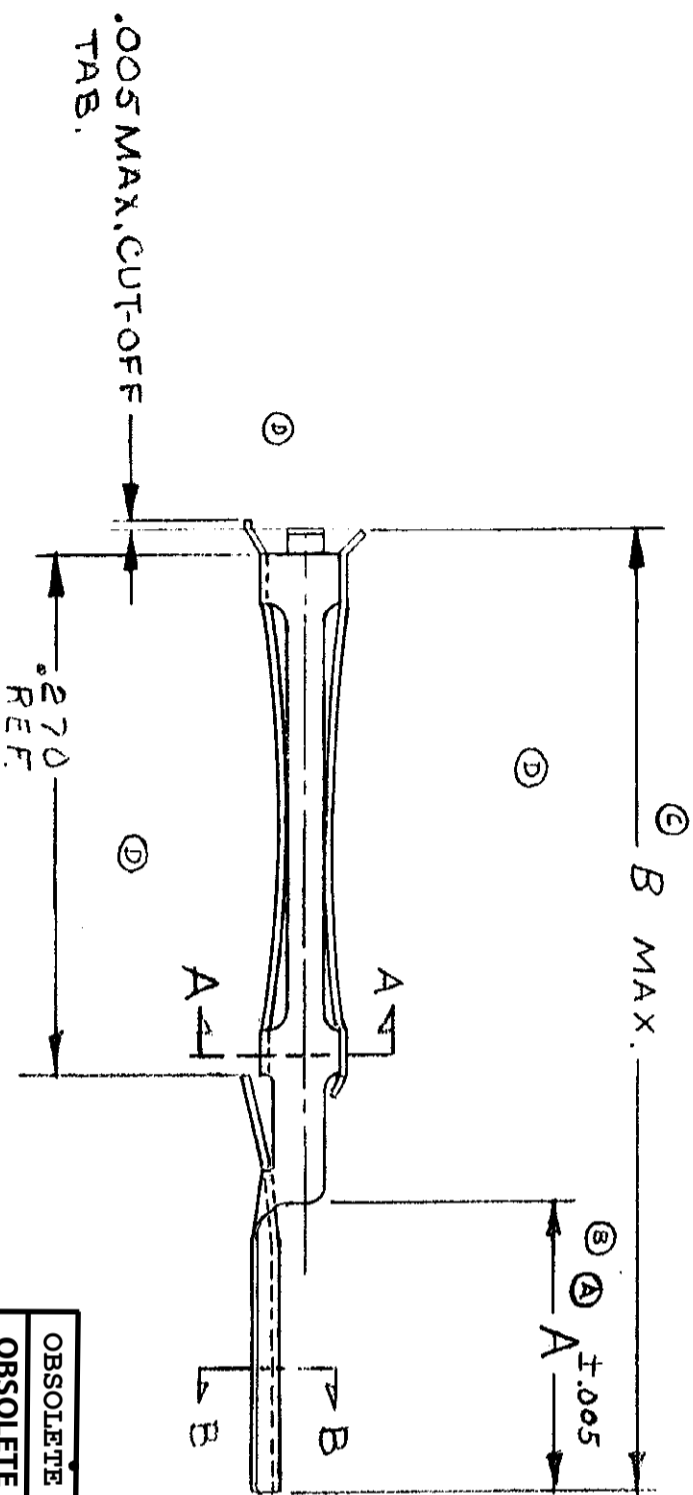
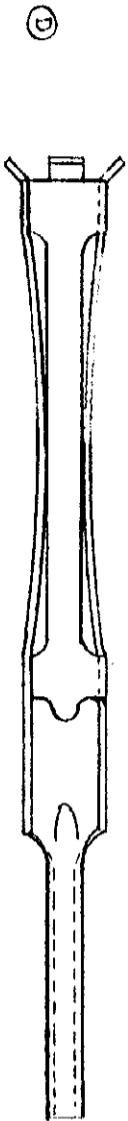


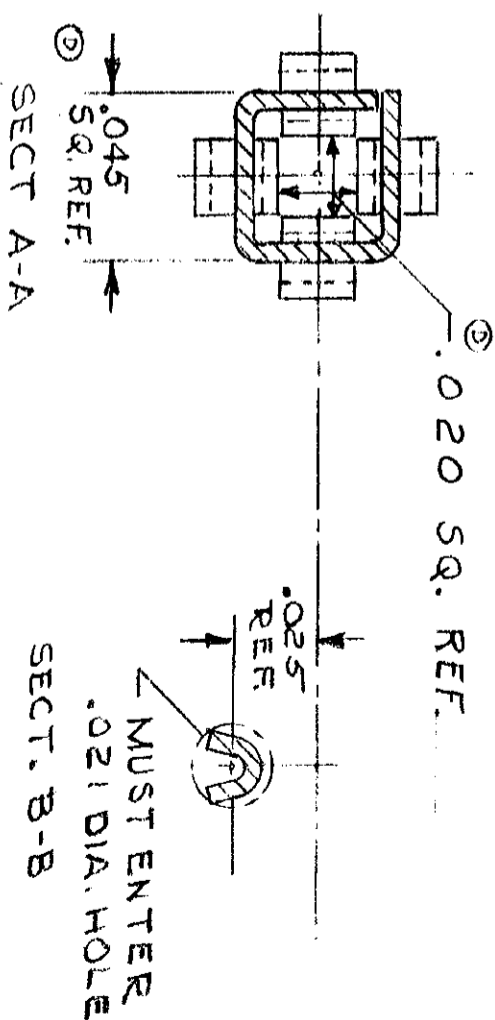
© 1964 AMP INCORPORATED. ALL RIGHTS RESERVED. AMP PRODUCTS COVERED BY PATENTS AND/OR PATENTS PENDING.

NUMBER 202946



FINISH : .000050 GOLD IN CONTACT AREA, TIN-LEAD TAILS, NICKEL UNDERPLATE ALL OVER.

ZONE	LTR	DESCRIPTION	REVISED PER ECN	DATE	APPROVED
A		REVISIED PER ECN	1594	11-1-67	M.S. 24
B		REVISIED PER ECN	2025	2-9-69	M.S. 24
C		REVISIED PER ECN	2129	6-25-69	M.S. 1-4
D		REVISIED PER ECN	2913	3-9-71	M.S. 1-4
D1		ADDED -3 WAS 5087-5614 US 3247	3247	11-11-71	M.S. 24
D2		ADDED -4	4701	8-30-76	M.S. DR.
E		REVISIED FINISH-1-2	722675	2-26-81	(P-10)
E1		ADDED -5	7879 14g	3-82	WAP
E2		REVISIED PER ECO-16-002336		29MAR16	CT



202946-5	.249	.619	△
202946-4	.249	.619	.000050 GOLD OVER .000030 NICKEL
202946-3	.170	.540	.000050 GOLD OVER .000030 NICKEL
202946-2	.249	.619	.000030 GOLD OVER .000030 NICKEL
202946-1	.170	.540	IN CONTACT AREA, TIN-LEAD OVER NICKEL IN TAIL AREA.

FINISH

AMP INFO
C70260 IN ACCORDANCE WITH ASTM B422
HEAT TREAT
SEE NOTE T

UNLESS OTHERWISE SPECIFIED DIM. ARE IN INCHES. TOLERANCES ON DECIMALS ± .005 ANGLES ±

CONTRACT NO. 3-24-66

DESIGN APPRO. *Substance 4/4/66*

DATE 4/4/66

NAME **AMP** AMP INCORPORATED HARRISBURG, PENNSYLVANIA

SIZE **B** CODE IDENT NO. **00779** NUMBER **202946**

CUSTOMER DRAWING