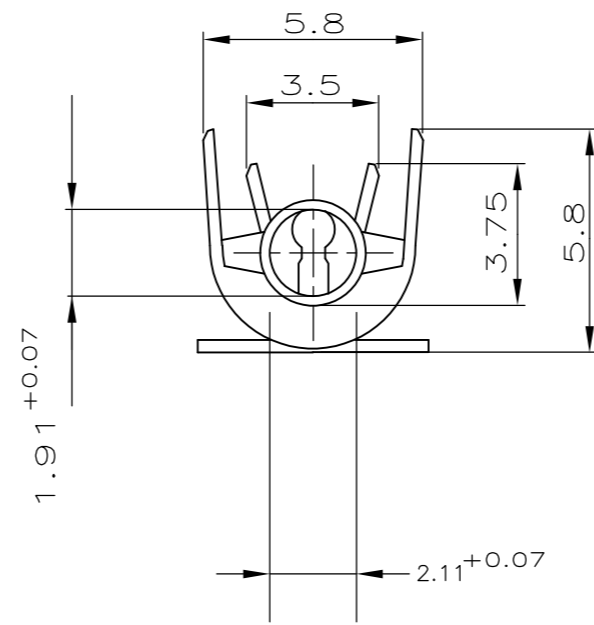
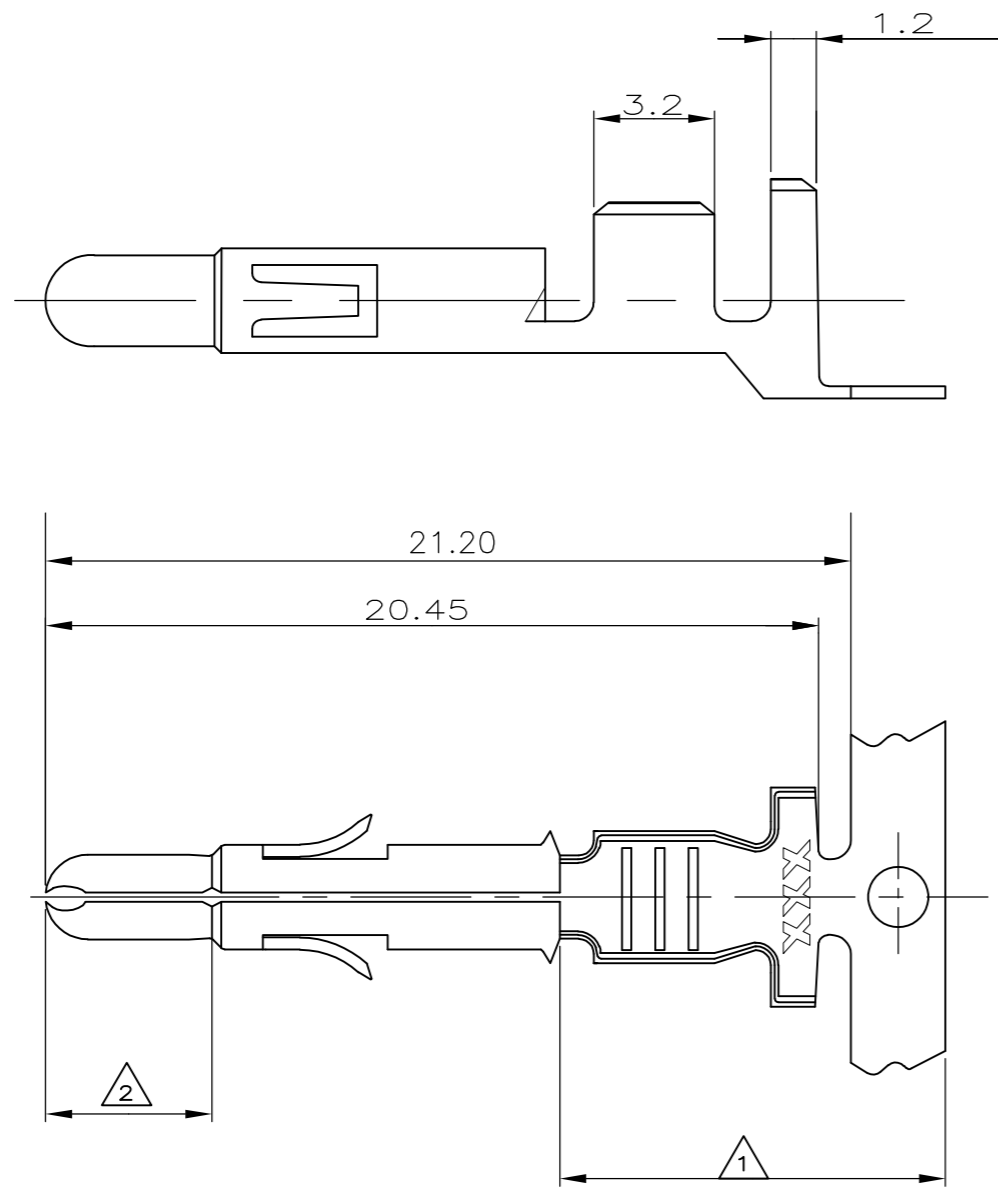


THIS DRAWING IS UNPUBLISHED. RELEASED FOR PUBLICATION  
 © COPYRIGHT - By - ALL RIGHTS RESERVED.

REVISIONS				
P	LTR	DESCRIPTION	DATE	APVD
K6		REVISED PER ECR-16-009696	25JUL2016	BW EW

- 1 2-5µm Sn über Ni in der crimpzone.
- 2 0.8µM Gold über Nickel in der kontaktzone
- 3 Für isolations Ø3.3-5.1 mm geeignet
- 4 OBSOLETE PARTS: OBSOLETE CIS STREAMLINING PER D.RENAUD/D.SINISI.



4	OBSOLETE	926902-7	926899-7	BRASS	1	2
		926902-6	926899-6	PHOS BRONZE	1	2
		926902-5	926899-5	COPPER ALLOY	vorverzinnt	
		926902-4	926899-4	COPPER ALLOY	blank	
		926902-3	926899-3	PHOS BRONZE	vorverzinnt	
		926902-1	926899-1	BRASS	vorverzinnt	
		LOOSE PIECE	Bestell-Nr	werkstoff	Oberfläche Farbe	

THIS DRAWING IS A CONTROLLED DOCUMENT.		DWN	11.11.03		
		CHK	12.11.03		
		APVD	13.11.03		
		PRODUCT SPEC			
DIMENSIONS: mm		TOLERANCES UNLESS OTHERWISE SPECIFIED:		NAME	
		0 PLC ± - 1 PLC ± - 2 PLC ± 0.2 3 PLC ± - 4 PLC ± - ANGLES ± -		UNIVERSAL M-N-L STIFT DGB 1.5-2.5 mm2	
MATERIAL		FINISH		SIZE	RESTRICTED TO
				A2	-
				CAGE CODE	DRAWING NO
				00779	C=926899
				SCALE	SHEET
				5:1	1 of 1
				REV	K6
				CUSTOMER DRAWING	

66899

926899