

THIS DRAWING IS UNPUBLISHED.

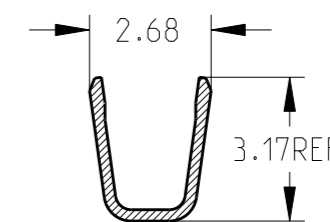
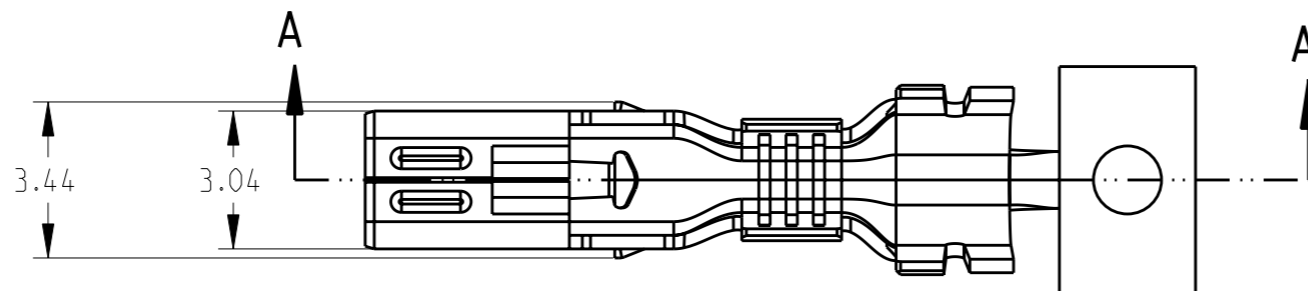
RELEASED FOR PUBLICATION

© COPYRIGHT 19 Y ALL RIGHTS RESERVED.

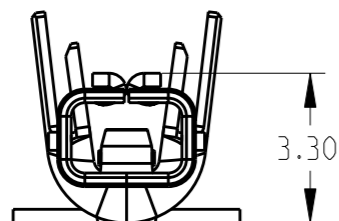
LOC ES DIST 00

REVISIONS

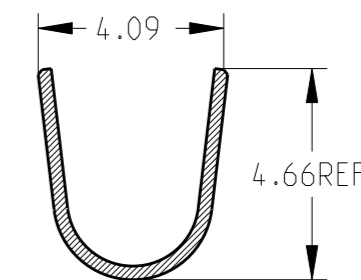
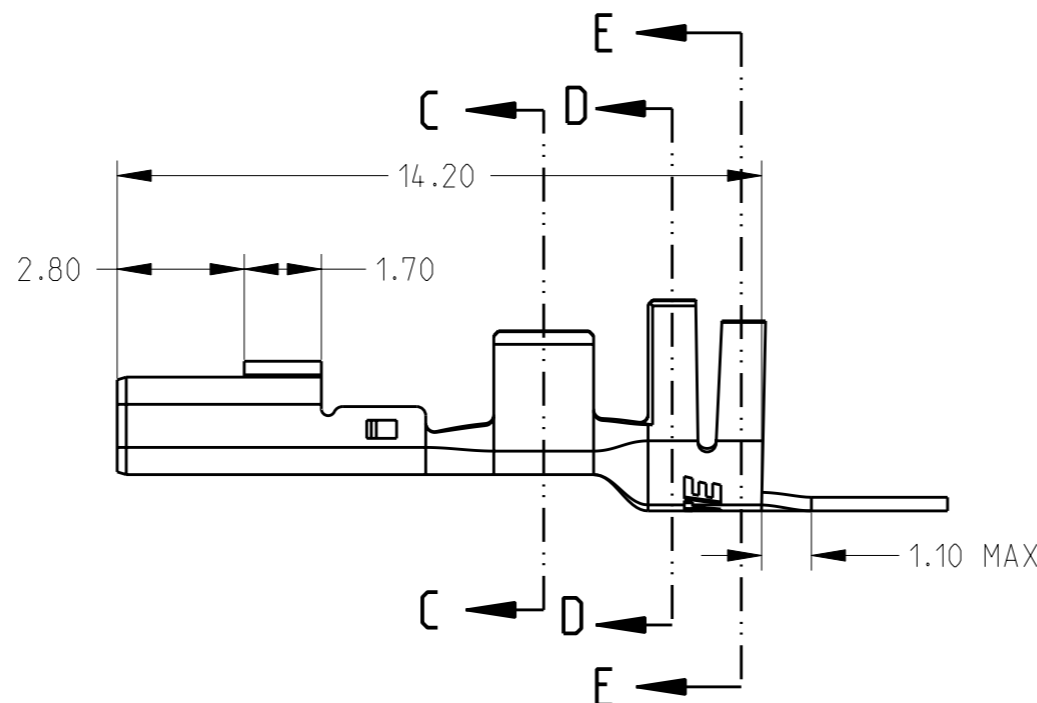
| P | LTR | DESCRIPTION | DATE | DWN | APVD |
|---|-----|-------------|------|-----|------|
| | | | | | |



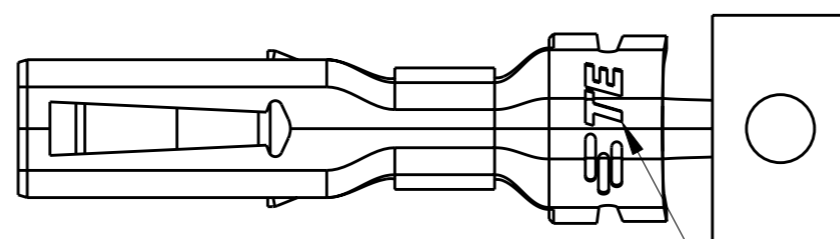
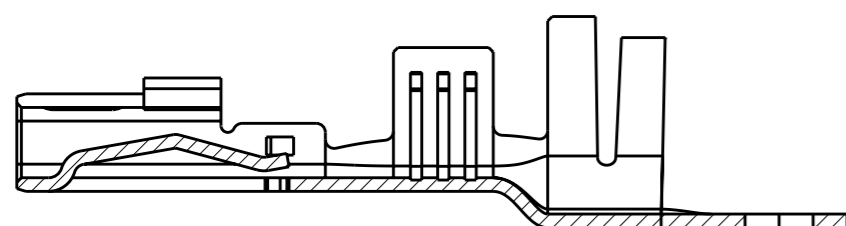
SECTION C-C



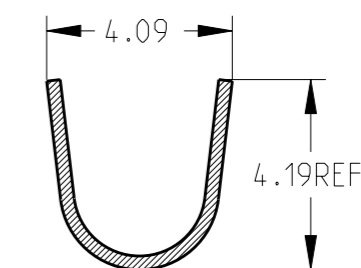
SECTION A-A



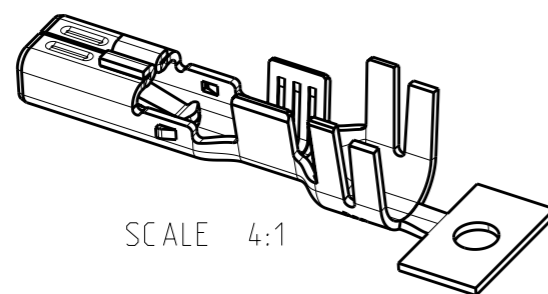
SECTION D-D



TRADE MARK



SECTION E-E



SCALE 4:1

NOTE:

- 1.MATERIAL: COPPER ALLOY, PRE-TINNED
- 2.APPLICABLE HOUSING P/N: 1983658-*, 1983659-*, 1983660-*
- 3.APPLICABLE WIRE RANGE: 16~20AWG

THIS DRAWING IS A CONTROLLED DOCUMENT.

| DIMENSIONS: | TOLERANCES UNLESS OTHERWISE SPECIFIED: |
|-------------|--|
| mm | |
| | 0 PLC ±- |
| | 1 PLC ±1.0 |
| | 2 PLC ±0.50 |
| | 3 PLC ±0.300 |
| | 4 PLC ±0.2000 |
| | ANGLES ± |

MATERIAL - FINISH -

DWN LEO LIU 19AUG2011

CHK HAPYE WU 19AUG2011

APVD ERIC KONG 19AUG2011

PRODUCT SPEC

108-106071

APPLICATION SPEC

114-106071

WEIGHT -

CUSTOMER DRAWING

PART NUMBER 1983663-1

STE TE Connectivity

NAME REC. CONTACT MULTI 6P CONNECTOR

| SIZE | CAGE CODE | DRAWING NO | RESTRICTED TO |
|------|-----------|------------|---------------|
| A3 | - | C=1983663 | - |

SCALE 6:1 SHEET 1 OF 1 REV A