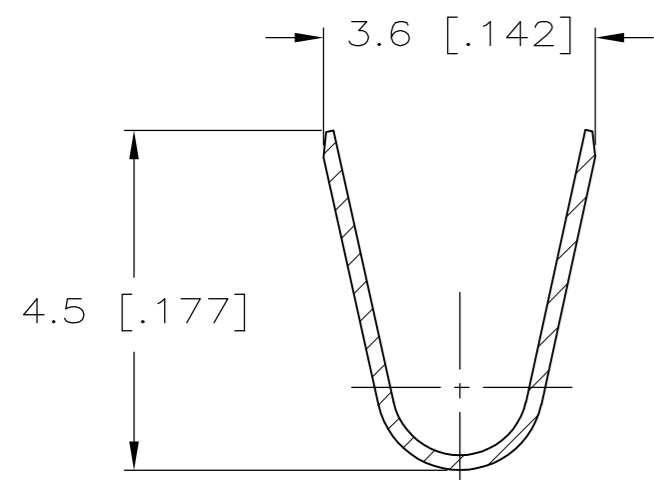
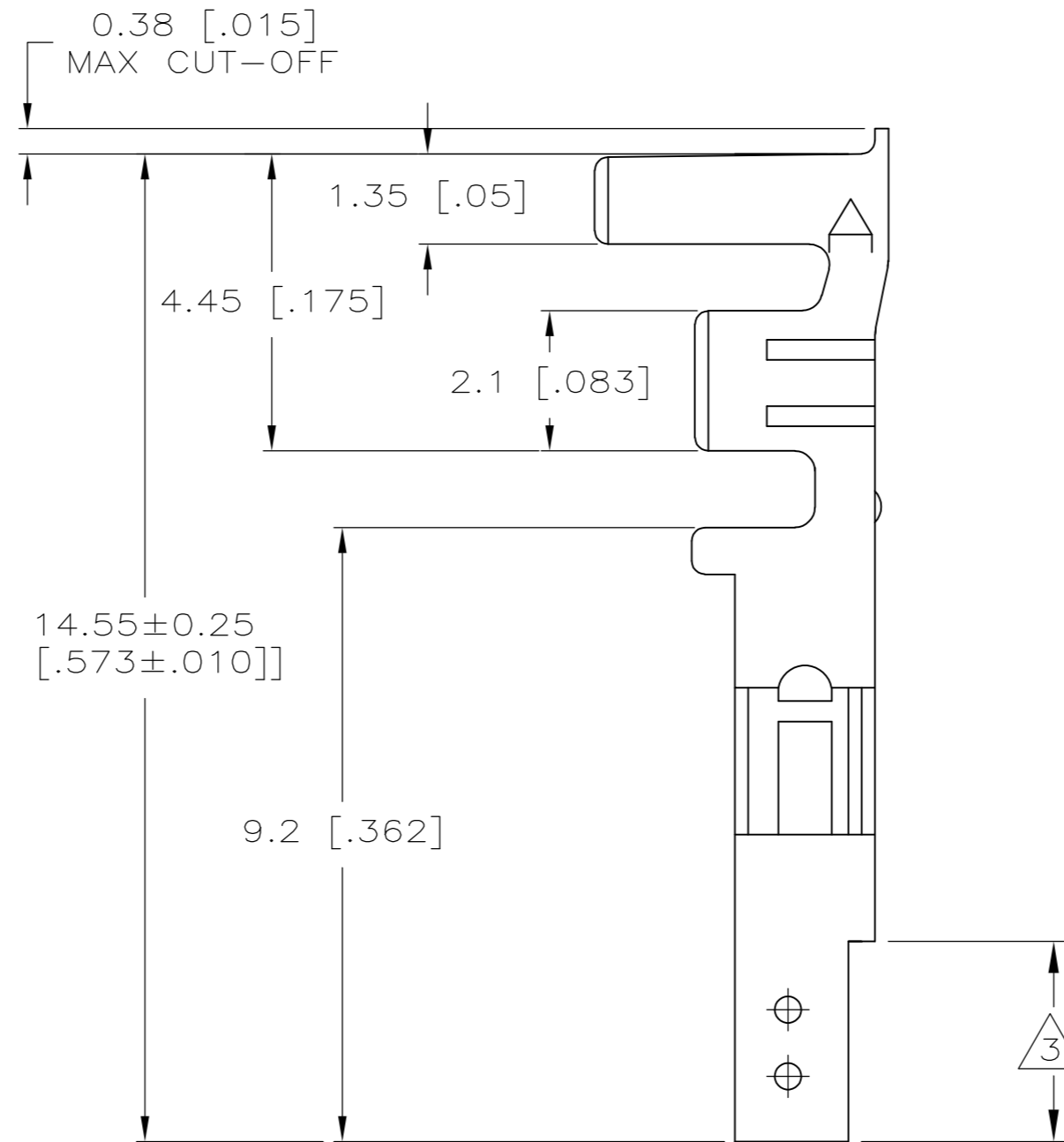
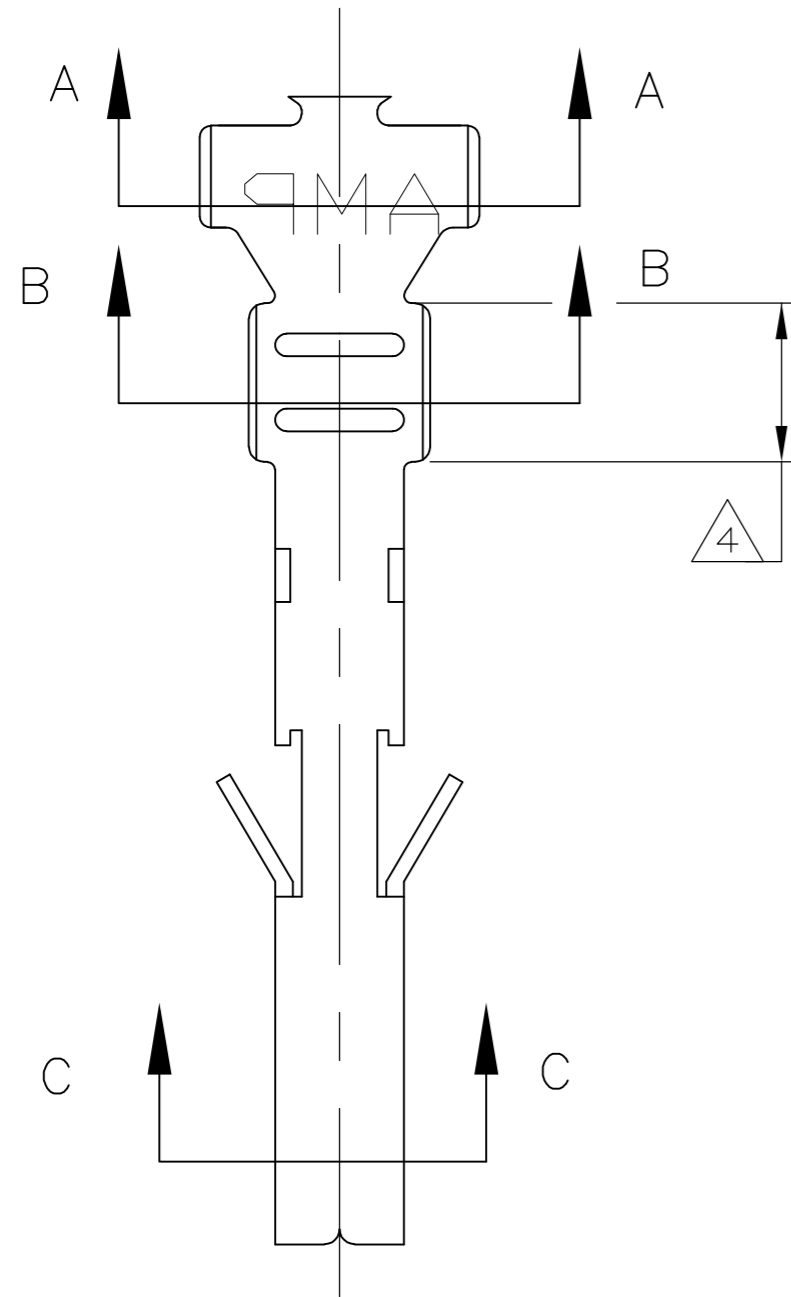


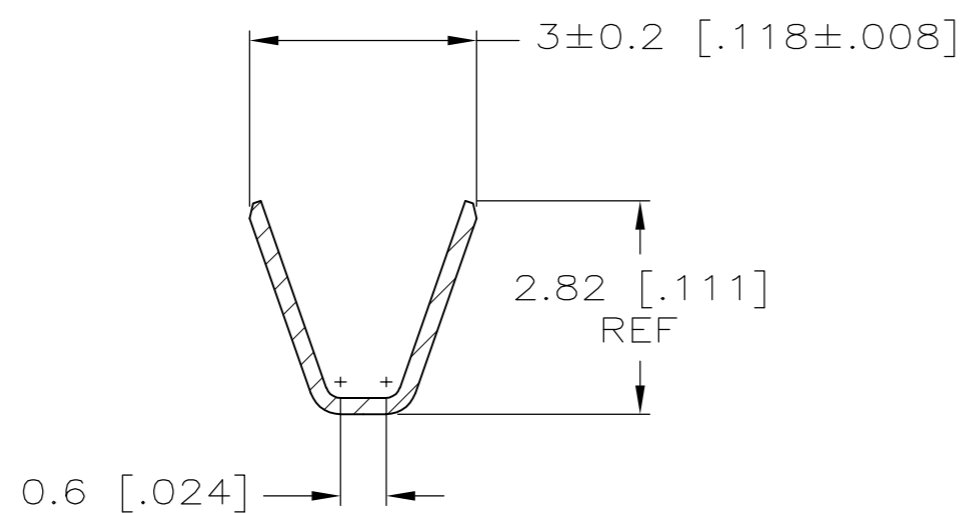
THIS DRAWING IS UNPUBLISHED. RELEASED FOR PUBLICATION
 © COPYRIGHT - By - ALL RIGHTS RESERVED.

LOC		DIST		REVISIONS			
P	LTR	DESCRIPTION		DATE	DWN	APVD	
	B2	REVISED PER ECR-13-019284		10DEC13	JR	KR	

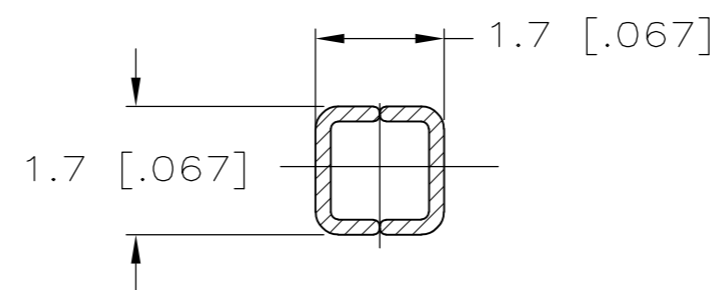
1. WIRE RANGE: 1.31mm² (16 AWG).
2. INSULATION RANGE 3.10 [.122] MAXIMUM DIAMETER
3. FINISH: 0.76µm MINIMUM GOLD OVER 1.27µm MINIMUM NICKEL REQUIRED ON INNER SURFACE, PERMITTED ON OUTER SURFACE.
4. FINISH: 2.54µm MINIMUM TIN ON ALL SURFACES IN THIS AREA.



SECTION A-A



SECTION B-B



SECTION C-C

METRIC

GOLD $\triangle 3 \triangle 4$	PHOS. BRZ.	1586841-4
PRE-TIN	PHOS. BRZ.	1586841-3
GOLD $\triangle 3 \triangle 4$	BRASS	1586841-2
PRE-TIN	BRASS	1586841-1
FINISH:	MATERIAL:	PART NO.

THIS DRAWING IS A CONTROLLED DOCUMENT.		DWN K. WHITAKER 04APR2007	TE Connectivity	
DIMENSIONS: mm [INCHES]		CHK C. CASH 04APR2007	NAME	
TOLERANCES UNLESS OTHERWISE SPECIFIED:		APVD C. CASH 04APR2007	TERMINAL VAL-U-LOK(TM) SOCKET (LOOSE PIECE)	
0 PLC ±		PRODUCT SPEC	SIZE A2	CAGE CODE 00779
1 PLC ± 0.2 [.01]		APPLICATION SPEC	DRAWING NO C=1586841	RESTRICTED TO -
2 PLC ± 0.13 [.005]		WEIGHT	SCALE 10:1	SHEET 1 of 1
3 PLC ± 0.254 [.0100]		CUSTOMER DRAWING	REV B2	
4 PLC ±				
ANGLES ±				
FINISH				