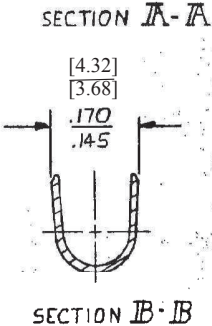
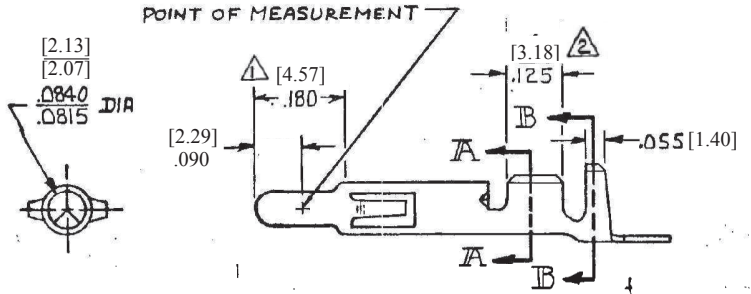
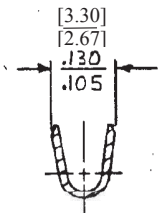
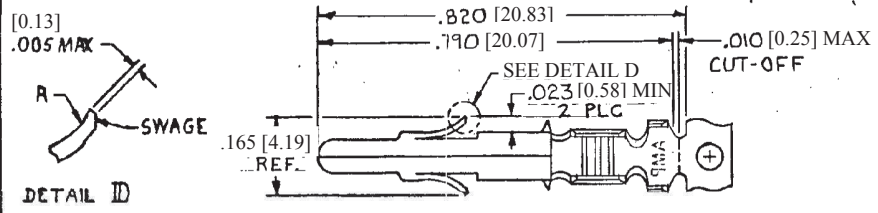


© COPYRIGHT

REVISIONS						
P	F	ZONE	LTR	DESCRIPTION	DATE	APPROVED
		Z		REVISED PER ECR-12-013323	10AUG12	TM
		Z1		REVISED PER ECR-14-005682	18APR14	KD



- 1 PLATED WITH .000030 [0.00076] GOLD, OVER .000050 [0.00127] NICKEL UNDERPLATE.
- 2 PLATED INTERNALLY WITH .000030 [0.00076] GOLD.
- 3 INSULATION RANGE: .060-.130 [1.52 - 3.30] OUTSIDE DIAMETER.

350547-7	MINI	GOLD	1	.012 [0.30] BRASS	350218-7	
350547-6				.012 [0.30] PH. BRZ	350218-6	
350547-3	MINI	PRE-TIN	2	.012 [0.30] PH. BRZ	350218-3	
350547-2				GOLD	.012 [0.30]	350218-2
350547-1				PRE-TIN	BRASS	350218-1
LOOSE PIECE (REF)	APPLICATOR TYPE	FINISH	MATERIAL	PART NO		

UNLESS OTHERWISE SPECIFIED DIMENSIONS ARE IN INCHES (MM) TOLERANCES ON DECIMALS ± .015 [38] ANGLES ±	CONTRACT NO			
	DR M. FENER 5-6-81			
	CHK S. Heide 6/9/81	NAME PIN, UNIVERSAL MATE-N-LOK		
	WIRE RANGE 20-14 AWG	APPD Dr. Palenik 6-10-81		
INSULATION RANGE 3	OSGN APPD	SIZE B	CODE IDENT NO 00779	DRAWING NO 350218
	OTHER APPD	SCALE 4-1	SHEET	

CUSTOMER DRAWING