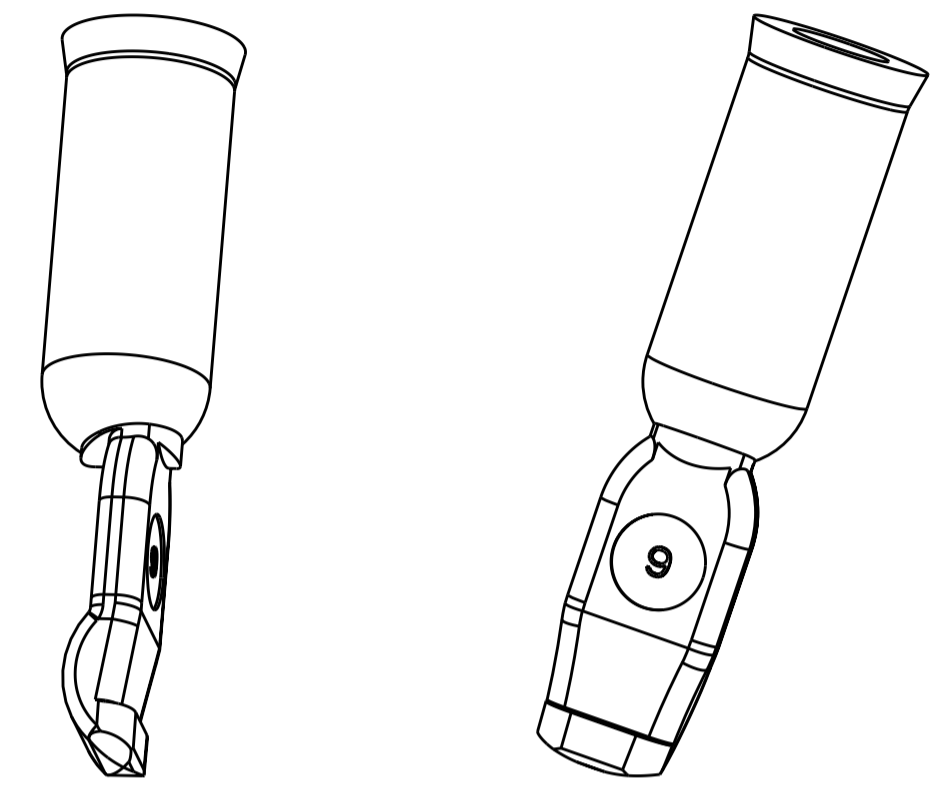
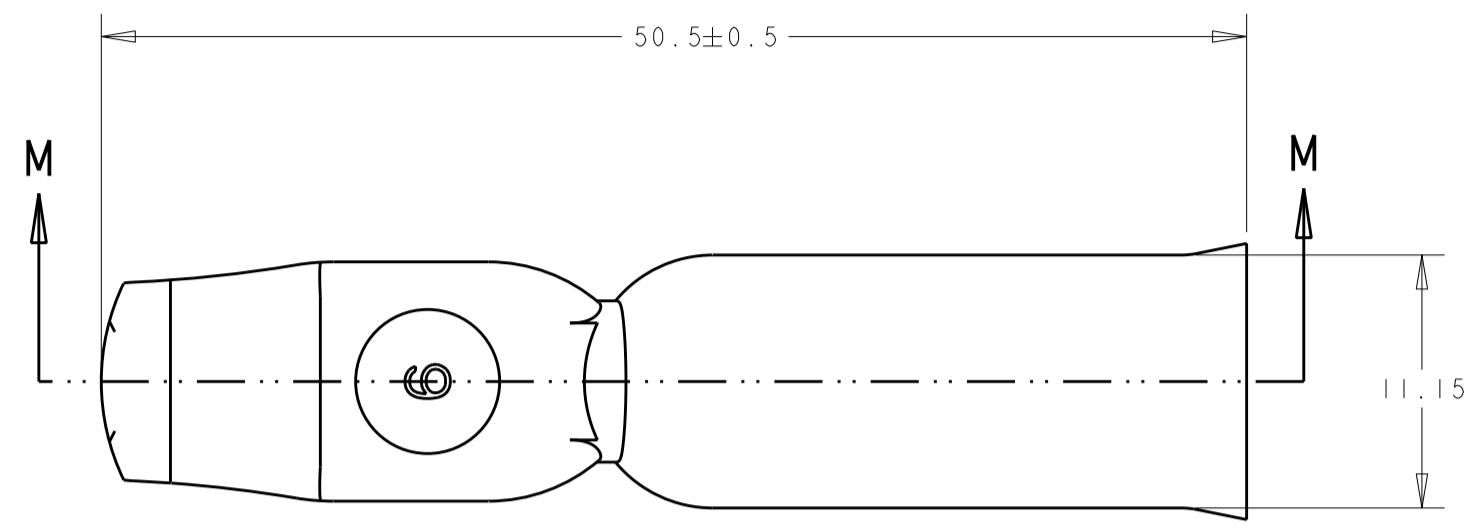
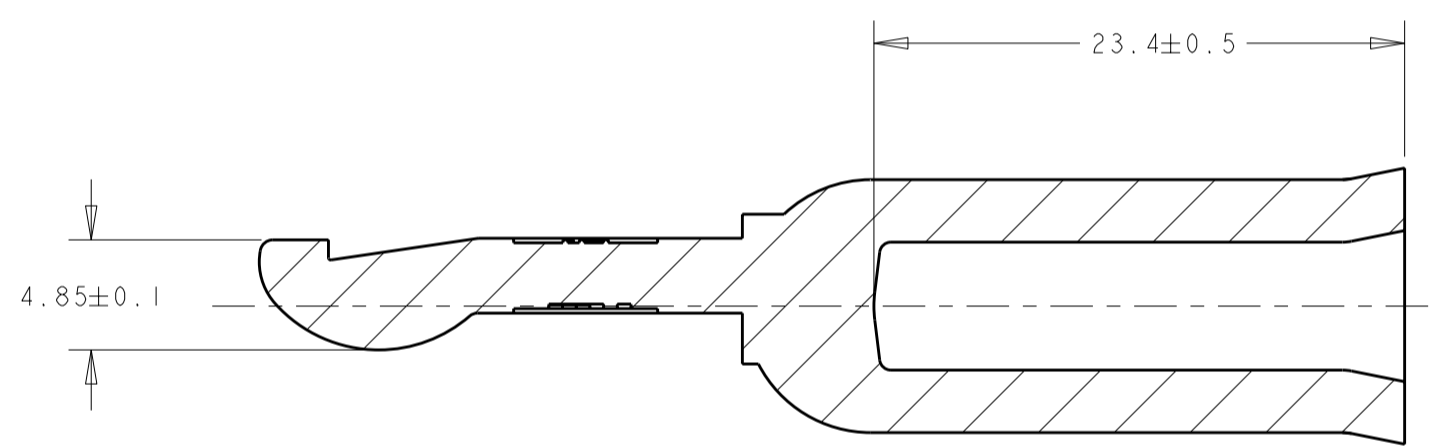


THIS DRAWING IS UNPUBLISHED. RELEASED FOR PUBLICATION 20
 © COPYRIGHT 20 BY TYCO ELECTRONICS CORPORATION. ALL RIGHTS RESERVED.

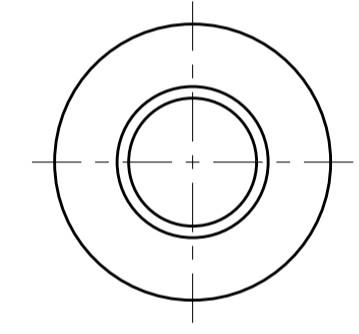
LOC		DIST		REVISIONS			
P	LTR	DESCRIPTION	DATE	DWN	APVD		
	A	REV PER ECR 10-006756	31MAR10	JR	SM		



SCALE 2:1



SECTION M-M



THIS PRINT IS
PRELIMINARY
 UNQUALIFIED PRODUCT
 CONTACT PRODUCT ENGINEERING
 BEFORE USING THIS PRINT

1446997-1
 PART NUMBER

- MATERIAL: SOFT ANNEALED COPPER.
- PLATING: SILVER PLATE.
- PART HAS PASSED AGENCY APPROVALS BUT HAS NOT COMPLETED TE QUALIFICATION TESTING.

<small>THIS DRAWING IS A CONTROLLED DOCUMENT FOR TYCO ELECTRONICS CORPORATION. IT IS SUBJECT TO CHANGE AND THE CONTROLLING ENGINEERING ORGANIZATION SHOULD BE CONTACTED FOR THE LATEST REVISION.</small>		DWN 07AUG2009 S SCHLEGEI CHK 07AUG2009 S STRECKWALD APVD 07AUG2009 S STRECKWALD	Tyco Electronics Harrisburg, PA 17105-3608
DIMENSIONS: mm	TOLERANCES UNLESS OTHERWISE SPECIFIED: 0 PLC ± 1 PLC ±0.5 2 PLC ±0.2 3 PLC ± 4 PLC ± ANGLES ±° FINISH	PRODUCT SPEC APPLICATION SPEC WEIGHT	NAME CONTACT AMP POWER SERIES 120, 6 AWG SIZE CAGE CODE DRAWING NO RESTRICTED TO A200779 C-1445997 -
MATERIAL		CUSTOMER DRAWING	SCALE 3:1 SHEET 1 OF 1 REV A